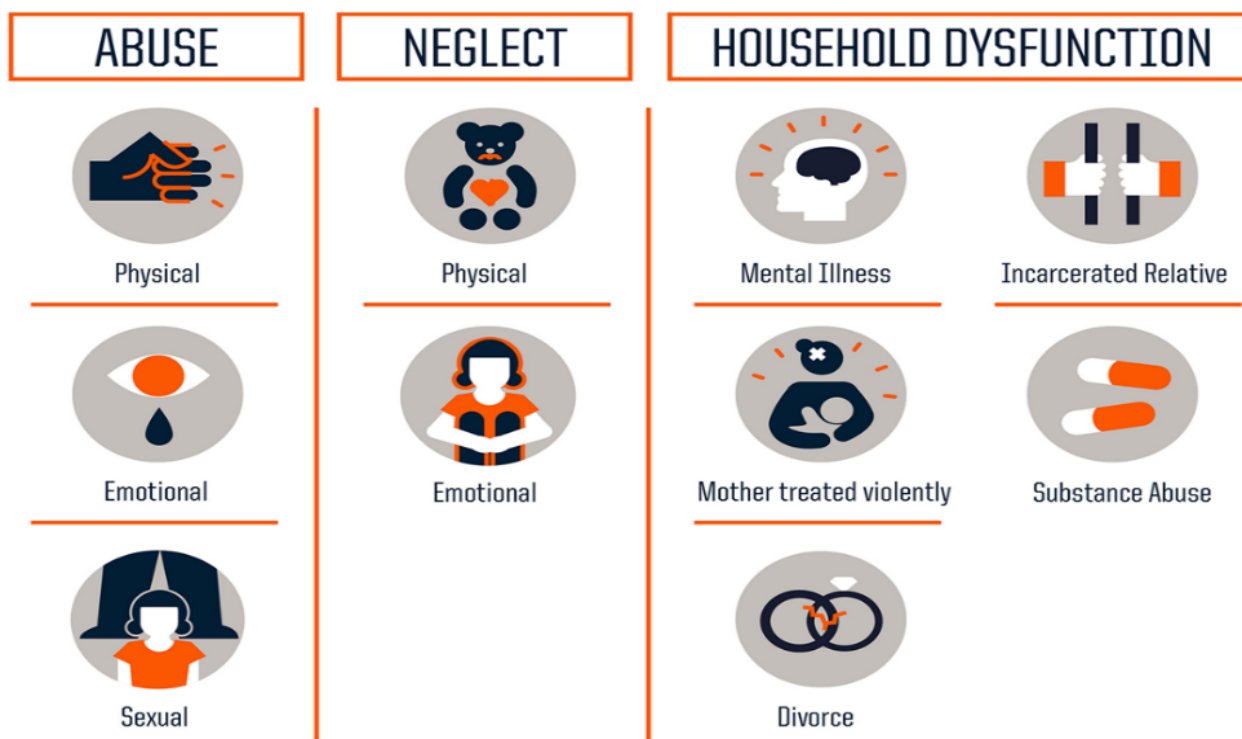
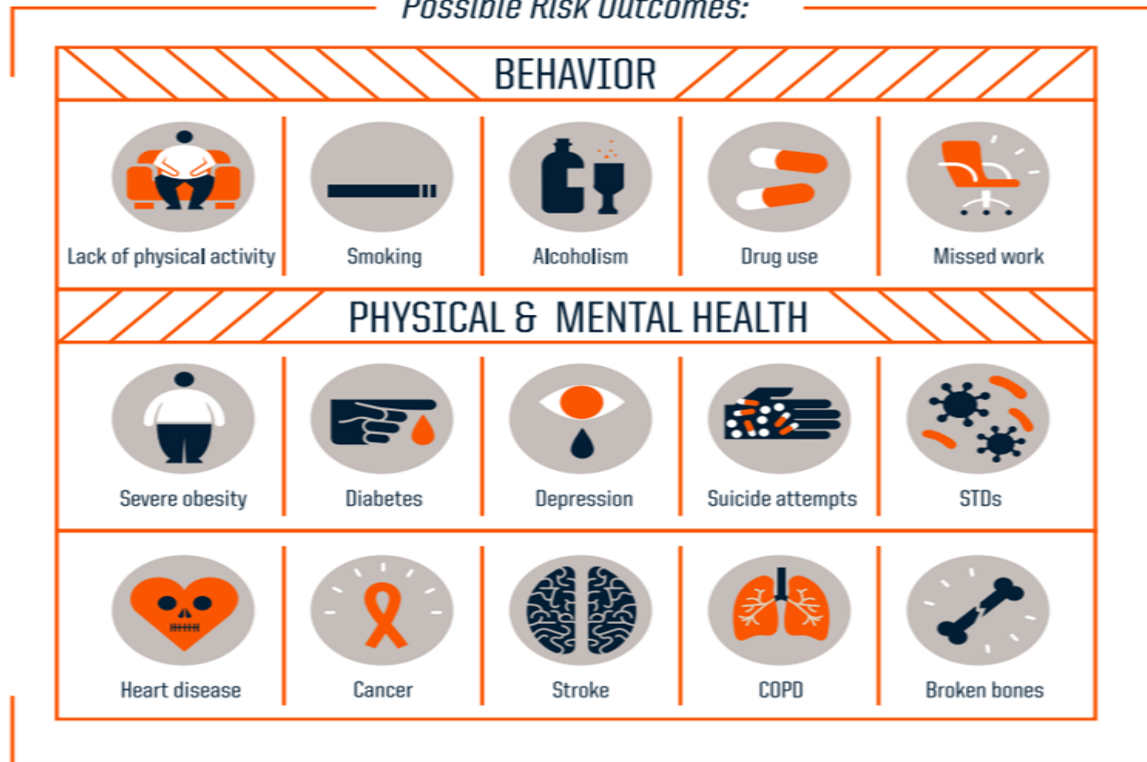


# Adverse Childhood Experiences (ACEs)



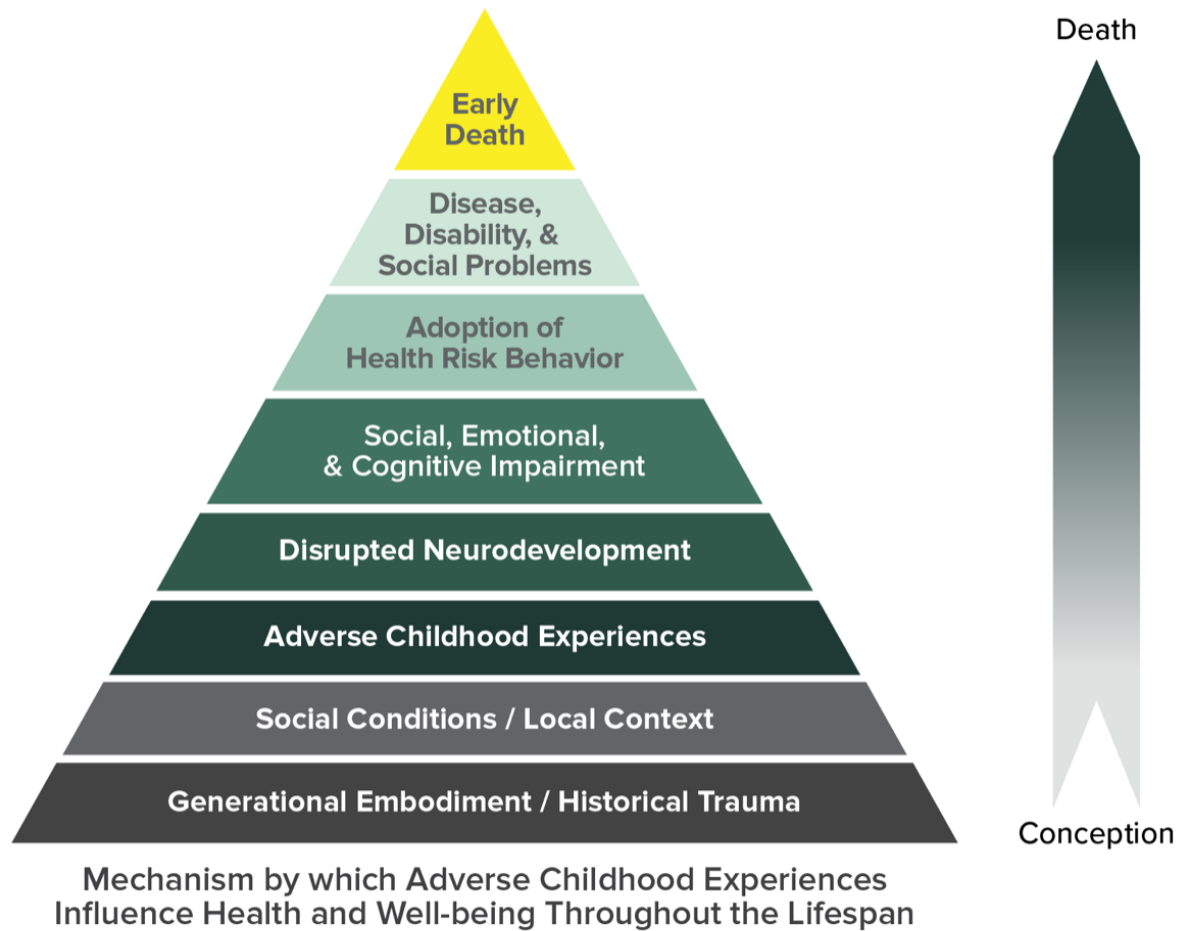
# Why Does It Matter?

*Possible Risk Outcomes:*



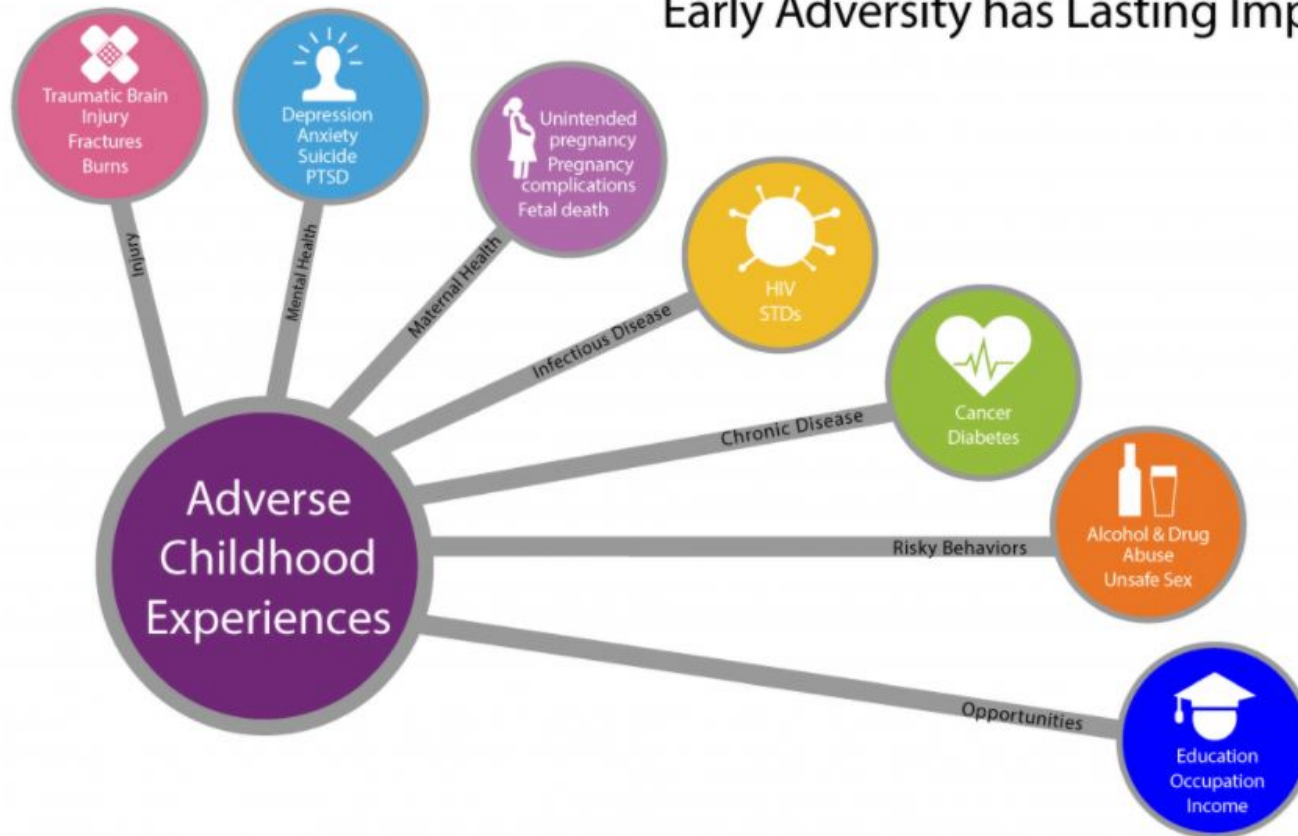
ACEs have been linked to:

- Risky health behaviors
- Chronic health conditions
- Low life potential, and early death



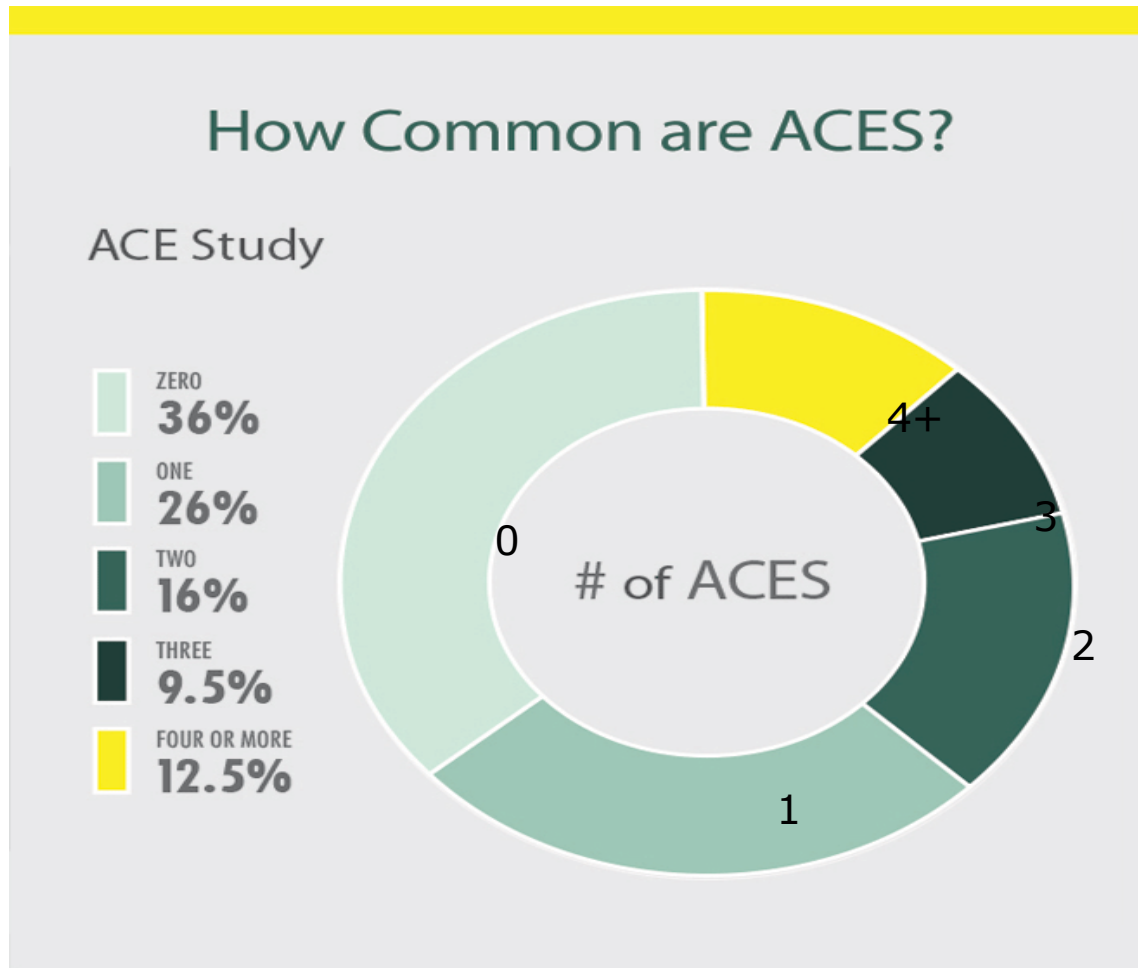
Source: Centers for Disease Control and Prevention, Kaiser Permanente. The ACE Study Survey Data [Unpublished Data]. Atlanta, Georgia: U.S. Department of Health and Human Services, Centers for Disease Control and Prevention; 2016; reviewed 2020.

## Early Adversity has Lasting Impacts



Source: Centers for Disease Control and Prevention, Kaiser Permanente. The ACE Study Survey Data [Unpublished Data]. Atlanta, Georgia: U.S. Department of Health and Human Services, Centers for Disease Control and Prevention; 2016; reviewed in 2020.

# Prevalence of ACEs



Source: Centers for Disease Control and Prevention, Kaiser Permanente. The ACE Study Survey Data [Unpublished Data]. Atlanta, Georgia: U.S. Department of Health and Human Services, Centers for Disease Control and Prevention; 2016; reviewed 2020.